

擠乾機 SQUEEZER

DE-300/350/350+

特點 / 特徵 / Features

- ▶ 防堵塞
- ▶ 附切刀粉碎
- ▶ 單手可拆開切刀座
- ▶ 換刀方便容易
- ▶ 可逆轉清料
- ▶ 噪音低(75dB)
- ▶ 整合控制箱於機體
- ▶ 並設計連動互鎖
- ▶ 產能高
- ▶ 含水量少於3%
- ▶ Anti-clogging
- ▶ Equipped with cutter for cutting function
- ▶ Open cutter base only with one hand
- ▶ Easy cutter replacement
- ▶ Reversible cleaning
- ▶ Low noise (75dB)
- ▶ Intergraded control panel and gear interlocking design
- ▶ High capacity
- ▶ Less than 3% moisture remaining

對照表 比較表 Comparison Table

	Chang Woen	Others
產能Capacity (Kg/Hr)	500~600	250~300
脫水份率Moisture Removal %	95~98%	90%
馬力Less Power Consume	125HP	150HP
LDPE Film	Yes	Yes
LLDPE Film	Yes	No
PP Film	Yes	No
產出形狀Output Format	Half Melted	Bulky Fluff
傳動Transmission	Planetary	Pulley
成型方式 Molding methods	Die模頭	Hydra 油壓

Technical Data技術細節	DE-300	DE-350	DE-350+
Measurement (M) 外觀尺寸	4.3 x 1.5 x 2.1	4.8 x 1.7 x 2.2	4.8 x 1.7 x 2.2
Into Size (mm) 入口尺寸	600 x 600	650 x 650	650 x 650
Motor主機馬達	125HP	150HP	200HP
Transmission傳動	Planetary Gearbox 行星式齒輪減速機		
Shaft Material 主軸材料	特殊合金鋼 SACM		
Cutter Motor 切刀馬達	10HP		
Cutter Spec. 切刀規格	SKD-11 X 4 pcs		
Blower Motor 出料風車馬達	7.5HP		
Cooling Pump Motor 冷卻泵馬達	1HP		
Capacity Throughput 產能	DE-300	DE-350	DE-350+
LDPE/HDPE	450~550	550~600	800~850
PP	400~450	500~550	550~600



昶穩機械工業有限公司
昶穩機械工業有限公司
CHANG WOEN MACHINERY CO., LTD.
昶興國際貿易有限公司
昶興國際貿易有限公司
CHANG SINE INTERNATIONAL COMMERCE CO., LTD.

台中市沙鹿區中山路22-22號
台中市沙鹿區中山路22-22號
No. 22-22, Zhongshan Rd., Shalu Dist.,
Taichung City 433, Taiwan (R.O.C.)
Tel: 886-4-26627809, 26627810
Fax: 886-4-26627890
http://www.changwoen.com.tw
E-mail: jakc_kao@changwoen.com.tw



御盟國際貿易有限公司
御盟國際貿易有限公司
YUH MENG INTERNATIONAL CO., LTD.
乾良企業有限公司
乾良企業有限公司
GANLIANG ENTERPRISE CO., LTD.

新北市新莊區環林南路208巷9號
新北市新莊區環林南路208巷9號
No. 9, Ln. 208, Guanglin S. Rd., Xinzhuang
Dist., New Taipei City 242, Taiwan (R.O.C.)
Tel: 8866-2-22021498, 22026272
Fax: 886-2-22023900
http://www.kamen.com.tw
E-mail: k7830@ms13.hinet.net

Quality is the life of
a company and
efficiency indicates
the future
of a company

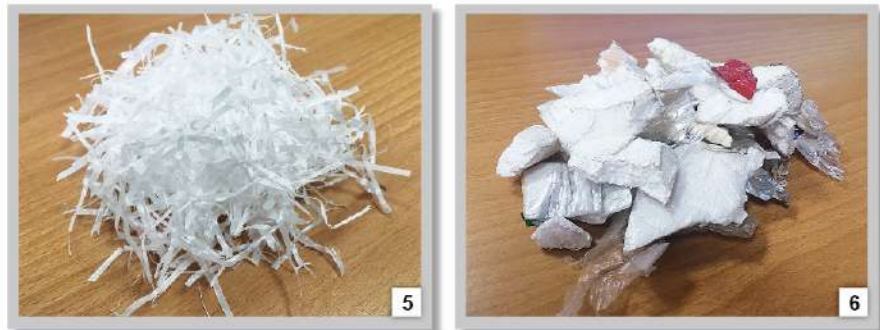
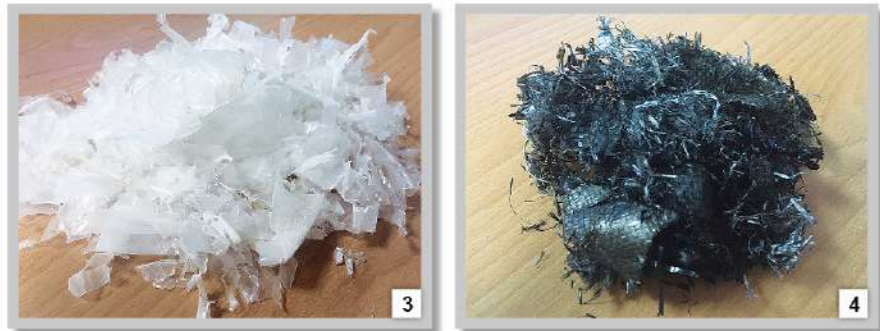


擠乾機

SQUEEZER

BEFORE SQUEEZER 擠乾前

MATERIALS / 物料



1. LDPE 農膜 / LDPE Agriculture film
2. LDPE 農膜 / LDPE Agriculture film
3. LDPE 農膜 / LDPE Agriculture film
4. PP 編織袋 / PP Woven Bag
5. PP 太空包 / PP Jumbo Bag
6. PS EPS 保麗龍 / PS, EPS Styrofoam



CUTTER

附上切刀粉碎擠乾後的料, 單手便可掀開刀座, 換刀方便容易

Equipped with cutter to cut the materials from the die. Easy to open cutter base within one hand and easy to replace cutter.



WATER DISCHARGE

水和殘渣會排到排渣桶

Water and residue will discharge to the water tank.



SCREW

採用先進螺桿技術, 把清洗過後的料擠乾, 更可逆轉清料。

Advanced screw technology, press out the moisture from washed materials. The screw also reversible to clean the materials out from the die.



GEARBOX

馬達直接連接義大利行星式減速機, 不會浪費動力。

Motor directly linked with Italy planetary gearbox and didn't waste any power.

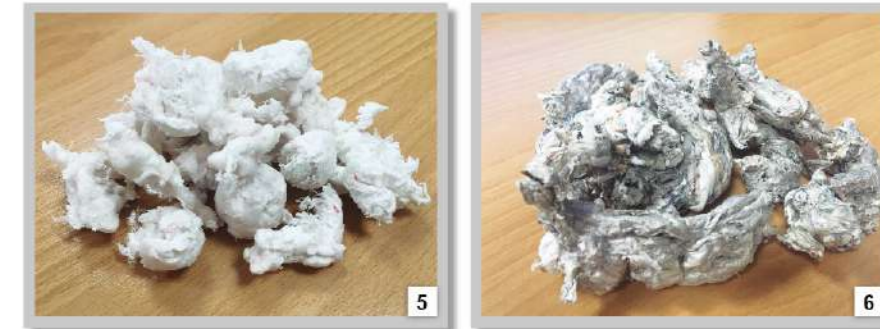


CONTROL PANEL

防水控制箱整合於機體並設計連鎖互鎖, 從入料, 擠乾到出料都由觸摸板面控制。

Waterproof Intergraded control panel with interlocking design. From input, squeezing to output are controlled by the easy-to-read touchscreen panel.

AFTER SQUEEZER 擠乾後



薄膜擠乾脫水機

以扭轉擠壓的方式來處理水洗過的薄膜碎片塑料。一般來說, 經過清洗線洗過的薄膜塑料, 仍有40%乾基水份, 或15%濕基水份殘留, 加上薄膜輕薄容易摺疊與纏繞的特性, 透過一般的離心式脫水不能完全將水份乾燥。

後端押出造粒機對水份的接受度多半為10%, 某些特殊用途甚至要求5%最大水份殘留。本機台可以將水份降低至2%~5%殘留(*視原料條件)。含水率10%的料在同樣的押出造粒機操作下, 產能差別達15%。

Drying squeezer for films

Twisting and squeezing to deal with wet plastic film pieces.

In general, films still have 40% moisture of dry basis or 15% moisture of wet basis after washing. Moreover, films are folded up and tangled easily because of its thinness, centrifugal dryer cannot dry up the moisture completely. About moisture acceptance, most pelletizers asked for 10% moisture residual; some pelletizers for special purpose even asked for 5% moisture residual.

Chang Woen squeezer can reduce moisture residual to 2%~5% (* depends on material condition). Using squeezing and melting technologies to dry up the moisture efficiently.

SQUEEZER